

Primer on Nursing Education

Mary E. Burman

Interim Dean

Fay W. Whitney School of Nursing

University of Wyoming

Judy McDowell

Director

School of Nursing

Sheridan College

Presentation for the Wyoming Healthcare Commission

January 14, 2008



Outline

- Overview of Nursing Education
 - Nationally
 - State of Wyoming
 - Role of Community Colleges
 - Role of UW
- Issues in Nursing Education
- Current Initiatives
 - UW-Community College Collaboration
 - Nursing Workforce Center



Overview of Nursing Education

- Certified Nursing Assistant
- Licensed Practice Nurse
- Registered Nurse
 - Associate Degree
 - Diploma
 - BSN
 - Basic
 - Accelerated
 - RN-BSN Completion
 - Direct entry graduate
 - MS
 - ND (programs transformed to DNP programs)
- Advanced Practice Nursing (NP, CNM, CRNA, CNS)
 - Master's degree
 - Doctor of Nursing Practice (DNP)
- Other nursing master's level degrees (e.g., nursing administration)
 - Clinical Nurse Leader
- PhD



Nursing Program Regulation

- Wyoming Board of Nursing (WBON) approval
- National accreditation
 - CCNE (BSN and master's programs; will be accrediting DNP programs)
 - NLNAC (LPN, AD, diploma, BSN and master's level programs)



Nursing Regulation

- CNA: Certification test and certified through WBON
- LPN: NCLEX PN and licensure by WBON
- RN: NCLEX RN and licensure by WBON
- APRN: National certification and recognition by WBON



Community College

- Seven in the state of Wyoming
- Six offer Associate degrees in Nursing, LPN certificates and CNA classes
- Most admit students once per year and run two classes simultaneously
- One admits every semester
- All programs are designed to articulate with the University

Sheridan College

- Graduate 20-22 students per year
- Admit 24 students each fall
- Approximately 60% are employed locally each year
- Collaborative effort UWYO to further student and RN access to Bachelors level education
- Barriers to increasing numbers
 - Lack of qualified nurse educators
 - Limited clinical sites
 - Classroom space



University of Wyoming: Mission

The Fay W. Whitney School of Nursing will promote excellence in professional nursing for diverse populations, with an emphasis in rural health, through education, scholarship, outreach, and service.

University of Wyoming: Overview of Programs

- BSN
 - Basic: upper division major; on-campus
 - Accelerated: 2nd bachelor's degree; 15 month program; hybrid
 - RN-BSN completion: For RNs desiring a BSN; on-line
- Advanced Practice Nursing: hybrid; ~ 2 years full-time; MS or post-master's certificate
 - Family nurse practitioner
 - Psychiatric mental health nurse practitioner (Adult)
 - Proposed DNP
- Other nursing master's degree: MS or post-master's certificate
 - Nurse educator (on-line)



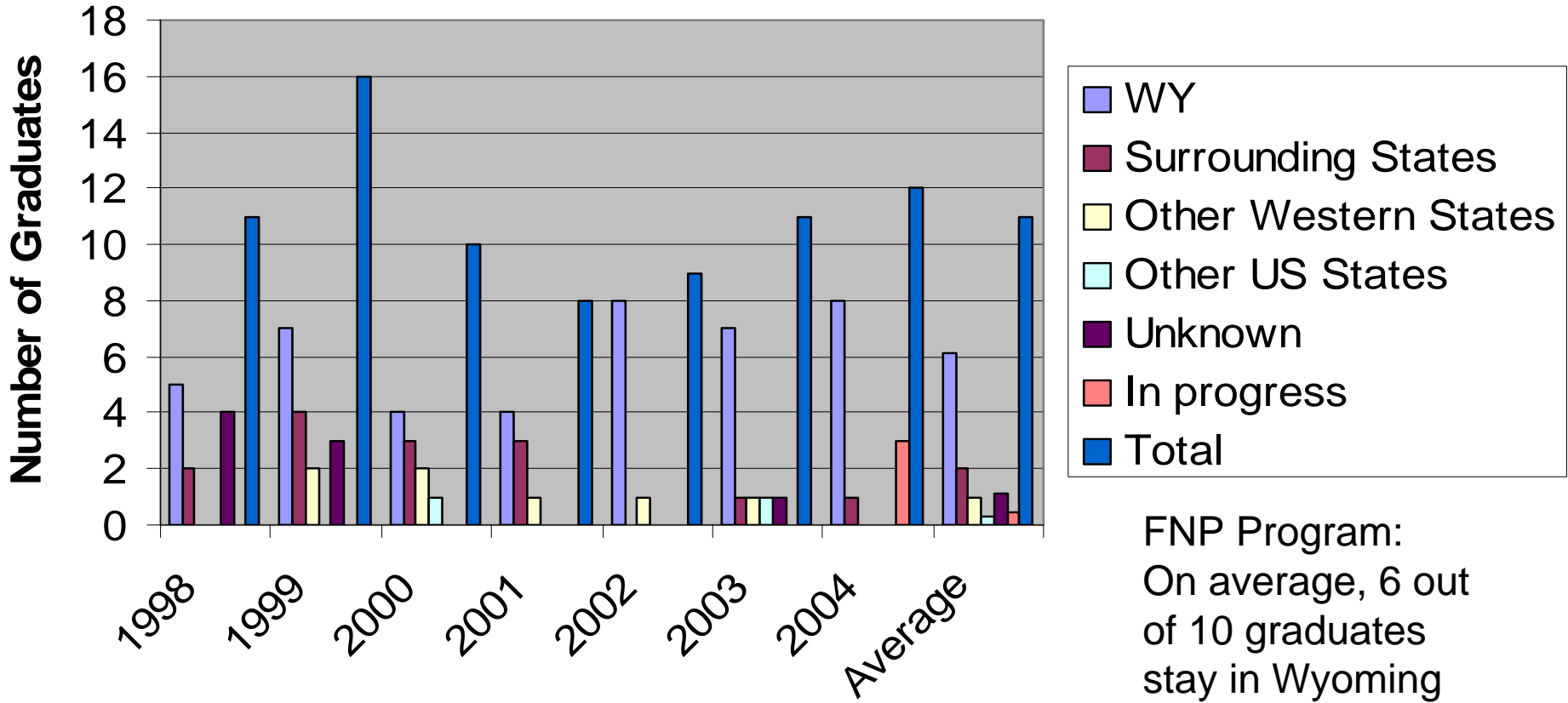
University of Wyoming: BSN program (2007)

	Total Number of students	Graduates
Basic		
Prenursing	217	
Juniors	49	
Seniors	51	51
Accelerated		
Cohort 1	19	19
Cohort 2	16	
RN-BSN Completion	174	32
TOTAL	526	174

University of Wyoming: Master's program (2007)

	Total number of students	Graduates
FNP		
MS	23	8
Certificate (post-master's)	2	1
PMHNP		
MS	8	5
Certificate (post-master's)	8	1
Nurse Educator		
MS	56	15
Certificate (post-master's)	3	1
TOTAL	100	31

Location of First Job After Graduation by State, 1998-2004



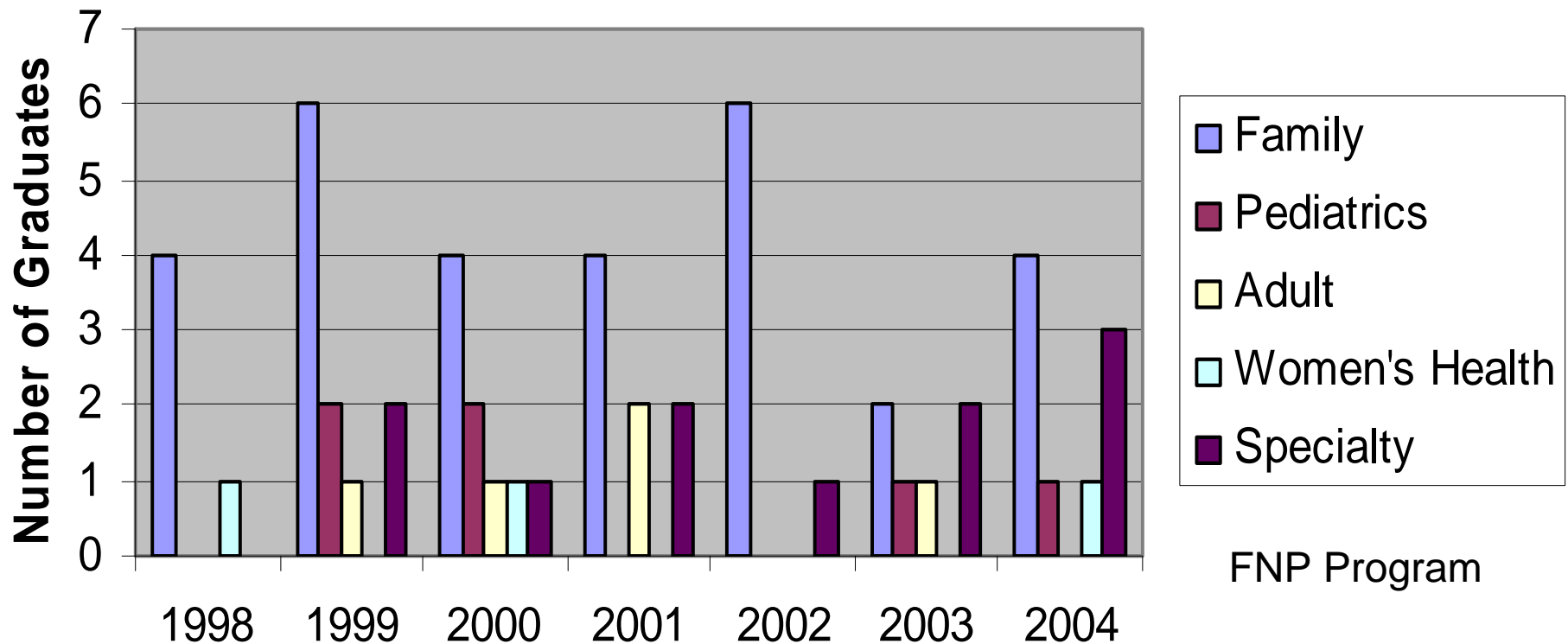
On average, APNs in Wyoming work 6.8 hours/day in direct patient care and seeing 15.1 clients/day (Brown, Hart & Burman, 2005).



Location of First Job in Wyoming After Graduation, FNP Program, 1996-2004

- Afton: 1
- Big Horn: 1
- Casper: 6
- Cheyenne: 10
- Douglas: 1
- Dubois: 1
- Evanston: 1
- Gillette: 2
- Jackson: 1
- Kemmerer: 1
- Laramie: 11
- Riverton: 3
- Rock Springs: 2
- Sheridan: 1
- Wheatland: 2
- Total: 45 graduates in Wyoming

Practice Area First Job Following Graduation, 1998-2004



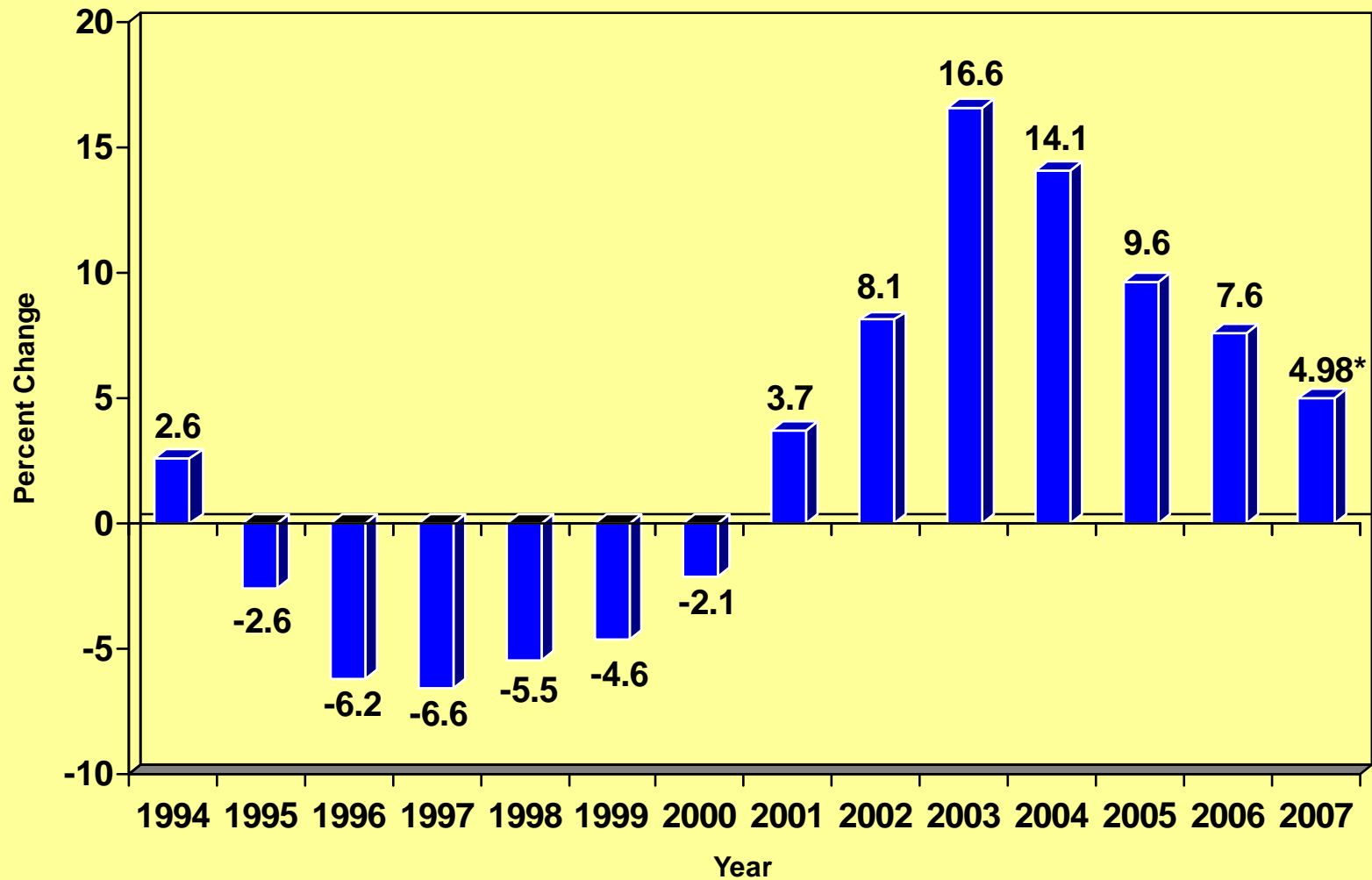
On average, APNs in Wyoming work 6.8 hours/day in direct patient care and seeing 15.1 clients/day. (Brown, Hart & Burman, 2005)



Issues in Nursing Education

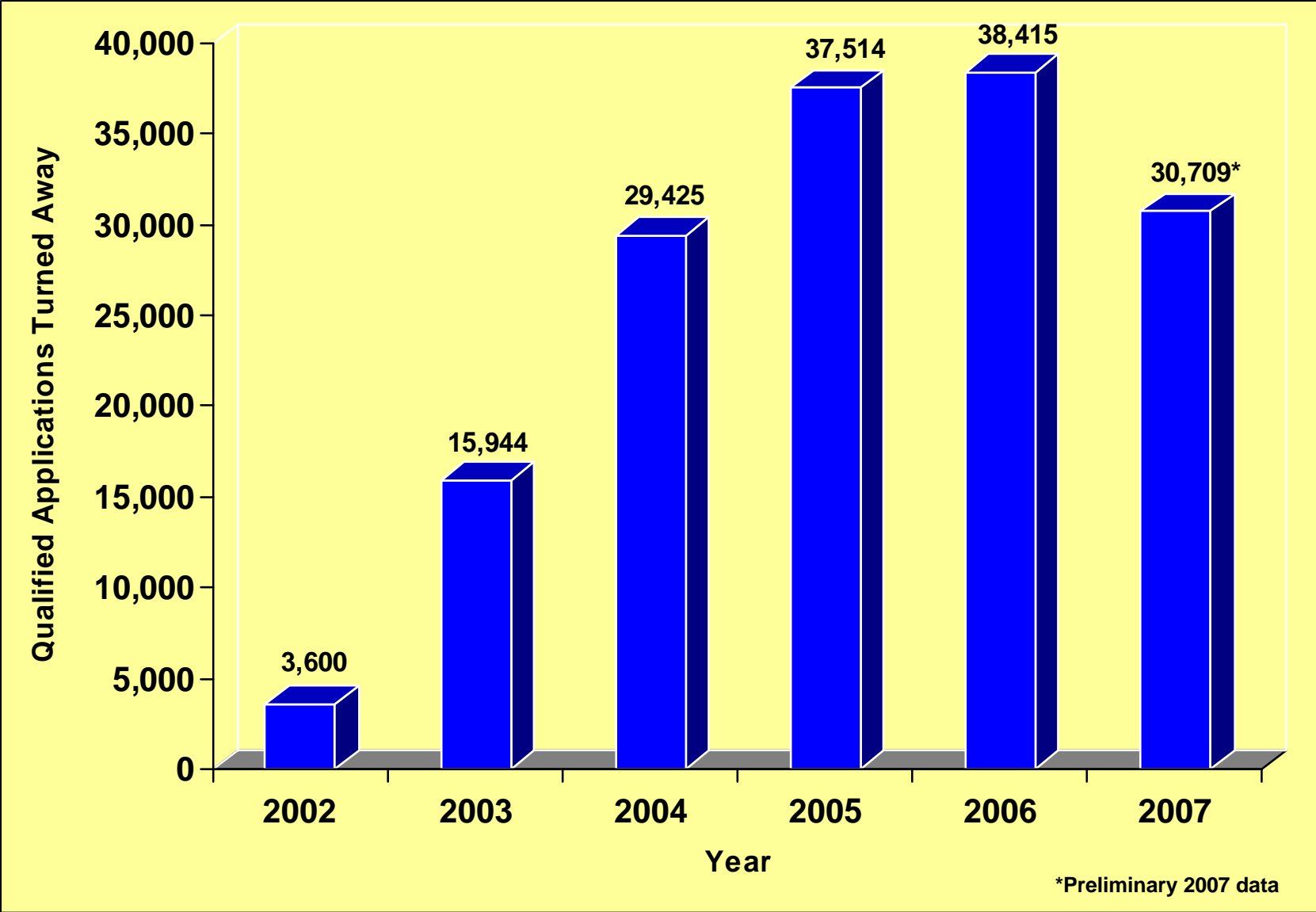
- Student Enrollments
 - Number of applicants
 - Number of available slots
- Faculty Shortage
- Clinical Experiences
- Clinical Simulation
- Incentives to obtain BSN
- Interprofessional Education

Percent Change in Enrollments in Entry-Level Baccalaureate Nursing Programs: 1994-2007



*Preliminary 2007 data

Qualified Applications Turned Away from Entry-Level Baccalaureate Nursing Programs: 2002-2007



SOURCE: American Association of Colleges of Nursing, Research and Data Center, 2002-2007
AACN is not responsible for reporting errors by respondent institutions.



UW-CC collaboration

- RN-BSN Completion
 - LEAP project funded by HRSA
 - Sheridan College and Edward A. Whitney Endowed Chair
- Other possibilities
 - Mobile simulation lab



Nursing Workforce Project of Wyoming (NWPW)

- Grant submitted to Robert Wood Johnson as part of Partners Investing in Nursing's Future
- Wyoming Community Foundation and UW SON
- Other partners: Wyoming Nurses Association, Wyoming Healthcare Commission, College of Health Sciences, Office of Rural Health, Wyoming Council for Advanced Practice Nurses, Wyoming School Nurses Association, Sigma Theta Tau, Nurse Educators of Wyoming, Wyoming Regional Medical Center, Campbell County Memorial Hospital, Power Valley Health Care, Westview Health Care Center, Pioneer Manor



Partners Investing in Nursing's Future

A partnership of the ***Northwest Health Foundation*** and the ***Robert Wood Johnson Foundation*** supporting local foundations to invest in nursing workforce solutions. Partners Investing in Nursing's Future is helping local and regional philanthropies develop solutions to the nursing workforce shortage.



NWPPW Goals

- To develop a Nursing Workforce Center in order to identify and address factors which contribute to the demand and the supply of CNAs, LPNs, and RNs in Wyoming.
- To implement and evaluate pilot projects that will impact work place environments in health care delivery settings in Wyoming with an emphasis on settings which provide care to the aging population in Wyoming.

Questions and answers



Mary E. Burman
Interim Dean and Professor
University of Wyoming
mburman@uwyo.edu
307-766-4291

Judy McDowell
Director
Sheridan College
mcdowell@sheridan.edu
307-674-6446 ext. 3306